

Suna'a Al-ibda'a Company

Trading & General contracting & Energy Services .LTD



WHO WE ARE

Starting from the year of establishment 2011, Sunaa Al-ibda'a company presents as a company committed to the highest standards of quality in carrying out business, giving an ideal impression of engineering commitment, quality standards and safety measures.

At the same time, the company continues to develop its business and expand on the level of specialties permitted by the licenses.

We consider ourselves in (Sunaa Al-ibda'a company a creative group of engineers who create creativity and distinction in all our work and thus the name of the company (Creativity Makers) was derived.

The company is now setting broad horizons for ambition and development in several sectors, as it specializes in engineering supplies, construction, civil & mechanical contracting, in the renewable energy sector, in addition to electrical energy services.

Registration number	UNGM Number	D-U-N-S number
77918	731778	-----

MISSION STATEMENT

We develop high quality ability & make the difference with all projects we handle & deliver successful projects.

VISION STATEMENT

To be the builder of choice for value minded clients and be the creative choice to complete any project.

INTEGRITY. EXPERTISE. LEADERSHIP

Our expertise in estimating, construction, project management and engineering services ensures that our customers receive a quality product at a fair cost and in a reasonable time frame. This is accomplished through the selective use of responsible subcontractors, hiring and retaining first class employees, and working for clients that share a belief in open, honest, and direct communication. We're committed to continuous success & devolvement.

What WE do

Residential & Industrial Building Construction

Supply & install Renewable energy equipment's.

Design & install Solar energy systems.

Utility System Construction.

Water and Sewer Line and water piping works

Oil and Gas Pipeline and Related Structures Construction

Power and Communication Line and Related Structures Construction

Highway, Street, and Bridge Constructions & Paving works

Heavy and Civil Engineering Construction

Foundation, Structure, and Building Exterior Contracting

Structural Steel and Precast Concrete Contracting

Electrical Networks, Wiring Installation & transform lines & towers.

Plumbing, Heating, and Air-Conditioning Contracting

Build - design - rehabilitations for Water treatment plants, water compact units & pumping stations.



Journeyman Craft Labor recruitment.

Our recruitment efforts for staffing up larger scale projects or maintenance initiatives begin at the local level. All of our projects begin with addressing labor resource requirements in detail. Our resources may originate through our direct hire, seasonal hire, membership affiliations, or via select few prequalified technical craft labor network providers with whom we maintain close relations and stringent prequalification processes.



Much of Suna'a Alibda'a's success has come from the "Suna'a Alibda'a Employee Referral Program", where an employee on a Suna'a Alibda'a project tells others about their experience working for Suna'a Alibda'a . The company database was created by means of employing craft labor

nationally since 2011. We know that exceptional safety training, tools, material, equipment and the supervision to get the job done right. There is nothing our craftsman likes better than a chance to do a great job.

Today, we at Suna'a Alibda'a maintain numerous examples of how this works around the country for us.

We are keen on the complete equality of rights and entitlements among all our employees in terms of color, gender, and ethnicity, and we do not allow and absolutely do not tolerate any kind of persecution, harassment, or discrimination.

Women's Empowerment



Not only at the administrative level, but in all opportunities to develop skills, abilities and experiences, we give (the company) a complete opportunity for women to prove themselves and real empowerment for effort and performance.

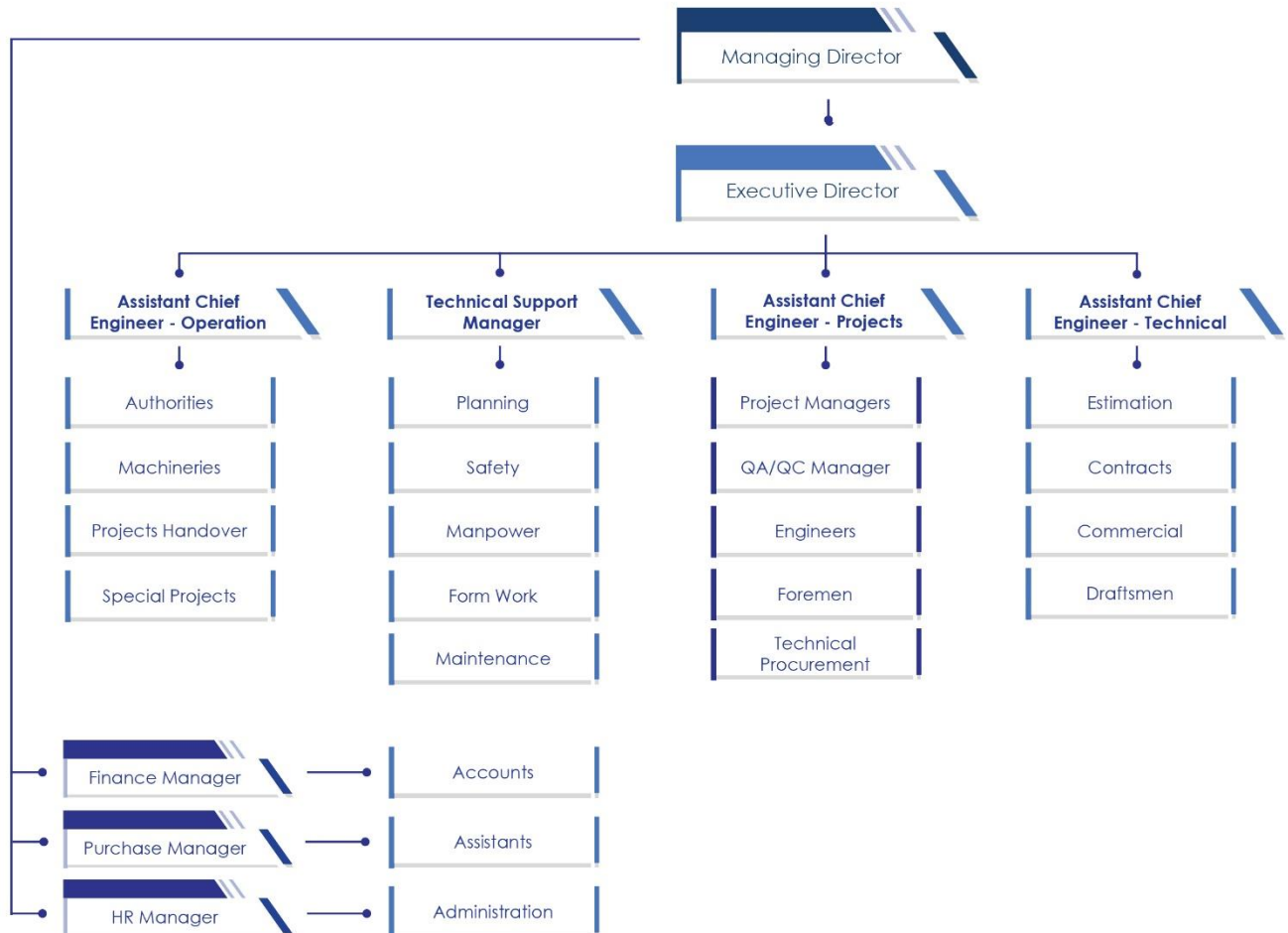
And always the women role is essential to the reasons for the success of projects and the accuracy of performance, so women accompany all steps of success in the company's successful march.

Employment metrics

- ❖ **Experience and specialization**
- ❖ **Geographical distribution**
- ❖ **Society's Empowerment and Women's Empowerment**
- ❖ **Professional, health and environmental commitment**
- ❖ **Legal age**



Management Structure



Empowered management

- ❖ Harmonious functional and professional sequence
- ❖ Work within the specialization
- ❖ Capacity development and assessment
- ❖ Engineers with great accumulated experience
- ❖ Competent craftsmen and technicians
- ❖ Appreciation and encouragement of the efforts of new workers and employees

QHSE

Suna'a Alibda'a is committed to managing Quality, Health, Safety and Environmental (QHSE) matters as an integral part of our business. In particular, it is our policy to assure the QHSE integrity of our processes and facilities at all times and at all places.

Suna'a Alibda'a will strive to provide a safe and healthy working environment and to avoid injury and impact and to the environment and the communities in which we do business.

Suna'a Alibda'a is a team dedicated to delivering complete customer satisfaction. This will be achieved through a focus on quality products, maintaining service quality and facilitate continuous improvement within each business process.

We will regularly establish and review objectives as part of our continuous improvement effort.



KEY OBJECTIVES:

Zero injuries, Zero harm to the environment and Zero damage to property and equipment.

Reduce Risk as low as reasonably practicable , and Risk Assessment for all key activities.

Ensure that QHSE standards are a key ingredient in the training, performance reviews, and incentives of all employees.

Ensure the required competence levels are met and training is ongoing for all personnel.

Ensure sub-contractor organizations manage HSEQ in accordance with this policy.

Continue to improve QHSE systems and performance as an integral part of Suna'a Alibda'a 's operational strategy.

Promote a culture in which all have the belief and commitment to achieve our goals.

Safety / Environmental Policy



It is the policy of Suna'a Alibda'a company and its subsidiaries to conduct business in a socially responsible and ethical manner that seeks to protect the environment.

Our goal is to be a leader in environmental practices by emphasizing and encouraging innovative and creative solutions, and continually improving our environmental performance.

Suna'a Alibda'a pledges to:

- ❖ Integrate environmental protection into every aspect of its business.**
- ❖ Comply with all environmental regulations without regard to the degree of enforcement.**
- ❖ Participate in the development of environmental legislation, regulation or policy issues that may significantly impact our business.**
- ❖ Work pro-actively with appropriate government agencies to ensure timely, reasonable and cost effective solutions for issues.**
- ❖ Follow relevant standards, good engineering practices and risk management principles to ensure Suna'a Alibda'a company' environmental protection activities are conducted responsibly.**
- ❖ Ensure adequate resources are available to comply with this policy.**
- ❖ Conserve company and natural resources by careful management of emissions and discharges, and by minimizing waste generation.**
- ❖ Ensure conformity with this policy and continual improvement through a comprehensive compliance program, including audits and the development and review of performance indicators.**
- ❖ Require that all employees are held responsible for compliance with all policies, procedures, practices and laws applicable to their duties.**

Experience

#	Project details	Year	Client	Amount \$
1	Park construction & BRC fence works -alkhalis - Diyala	2011	Diyala Province	42,320
2	Supply & Install Mobile WC Units in Talafer – Ninawa	2011	Islamic Relief	178500
3	Rehabilitation works for Baladrooz WTP - Diyala	2011	Diyala Province	84,620
4	Supply & Install three Split case Pumps for Allatifiya WTP - Baghdad	2012	Diyala Province	74,900
5	Install 200 m ³ WTP im Meherja-abu greeb - Baghdad	2012	Sub-contractor	233.900
6	Supply & install Healthy home in Mosul	2012	Islamic Relief	125,000
7	Raising two steel bridge - Al Ezz River - and re-establishing the road - Basra	2012	General Authority for Roads and Bridges Sub-contractor	472,856
8	Construction of three isolated warehouses Trusses in Aweerij Industrial Area	2013	Private sector	244,732
9	Water Pipe network laying -Mosul	2013	Islamic Relief	188,962
10	Re-build Dalli Abbas primary care health Center	2013	Diyala Province	91,755
11	Rehabilitations works for Had-Mixer alabbarah 4500m ³ /h , Diyala	2014	Diyala Province	311,000
12	Supply & install Tow solar systems 20 kw – Hilla -Babel	2014	Babel University ,Sub contractor with Alzawraa state company	70,000
13	Supply & install three transformers 1000 KVA – Qayyarah - Ninawa	2014	Ninawa Province	66,000
14	Rehabilitation of Tal Mariam primary school , Kirkuk	2014	Kirkuk Decorate of education	66,119
15	Supply tow Trucks (one Ton) to the product Decorate	2016	Doora Refinery	46,400
16	Build twin Villas in Diyala	2017	Private sector	320,670
17	Supply tools	2017	Mutasim State company	9,240
18	Supply Industrial equipment's & Tools	2017	Ministry of industry	19,300
19	Supply Batteries & solar inverters & DC cables with MC ₄ Connecters	2017	Alzawra state company	11,510
20	Supply & install SIX (3 KW) home application Solar system in Baghdad	2018	Private sector	24,000
21	Supply 17 cathodic protection systems based on batteries - Misan	2018	Ministry of oil	512,900
22	Build luxury villa in Baghdad	2019	Private sector	336,000
23	Supply & install steel lattice electricity poles with cables	2019	Mutasim State company	544,100

24	Supply & install steel tubular electricity poles with cables	2019	Mutasim State company	191,077
25	Supply & Install 3 generators to Balad main hospital – Salahaddin	2020	Salahaddin Decorate of Health	210,000
26	Commercial Building re-construction – alrabea street , Baghdad	2020	Private sector	411,200

General Manager Statement

Suna'a Alibda'a company has become one of the leading companies and a significant number in the field of contracting and the local competition market.

Proper planning and good management of all elements of production have been the main credit for the company's business success. In addition, the availability of a qualified human element and standing together with practical experiences is the most important policy adopted by the company in order to reach the completion of the best projects. The combination of scientific and academic methods with the long experience and knowledge of the company for 11 years has made it achieve high position in the Iraqi construction market.

The successes of the company and the expansion of its work led to the opening of a branch of the company in several governorates and given the clear vision of the leadership of the company the need to exploit all opportunities that will meet the ambitions and prospects of the leadership of the company without limits

The company has adopted a policy and strategy to divide the work within the company into sectors characterized by independence and decentralization in the implementation of the business in order to optimize the performance and get rid of administrative bureaucracy and organization of work and evaluation through production and level of performance and achieve goals and in return incentive to the extent of achievement and profits on the basis that the individual partner in the work or The institution is not used in it, which is returned to the company and its employees thanks to success and prosperity and continuity.

The success story reached by the company does not stop there. To provide job opportunities for Iraqi workers, train them and qualify them to be able to produce and contribute to construction and development as one of the most important principles and principles of social responsibility of the company.

